



MAINTENANCE & OPERATIONS BASE  
INFRASTRUCTURE AND FACILITIES IMPROVEMENT PROJECT

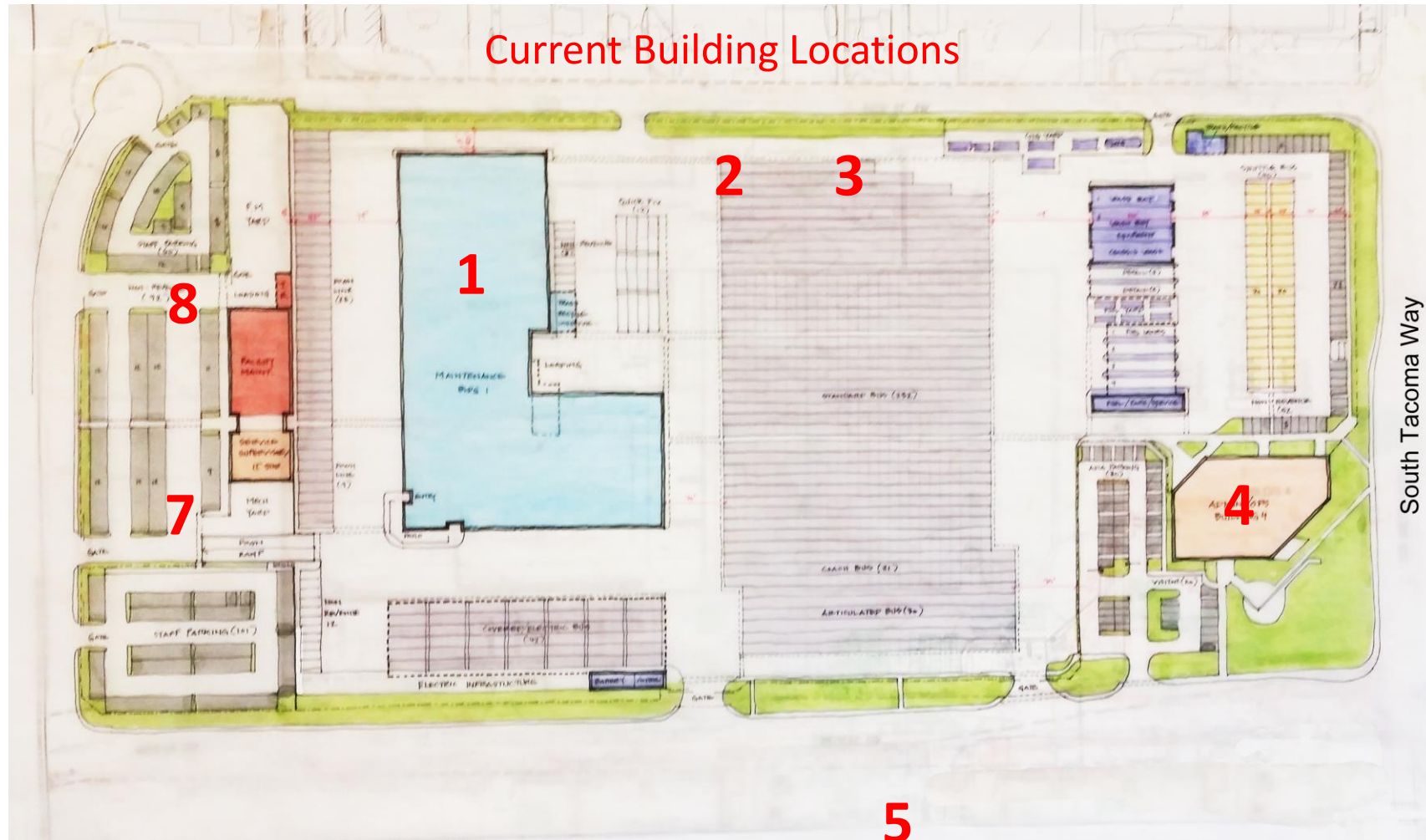
December 7, 2018 Design Charrette Outcomes

After week long design charrettes, held on December 3-7, we came up with a revised plan for base improvements.





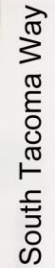
# Design Charrettes Outcome Sketch - December 7, 2018



## West Base



## Main Base



## So what are we planning to do?

5

6



## West Base

## Main Base



5

6









Pierce Transit  
Parking Lot Expansion Concept





2

3

5

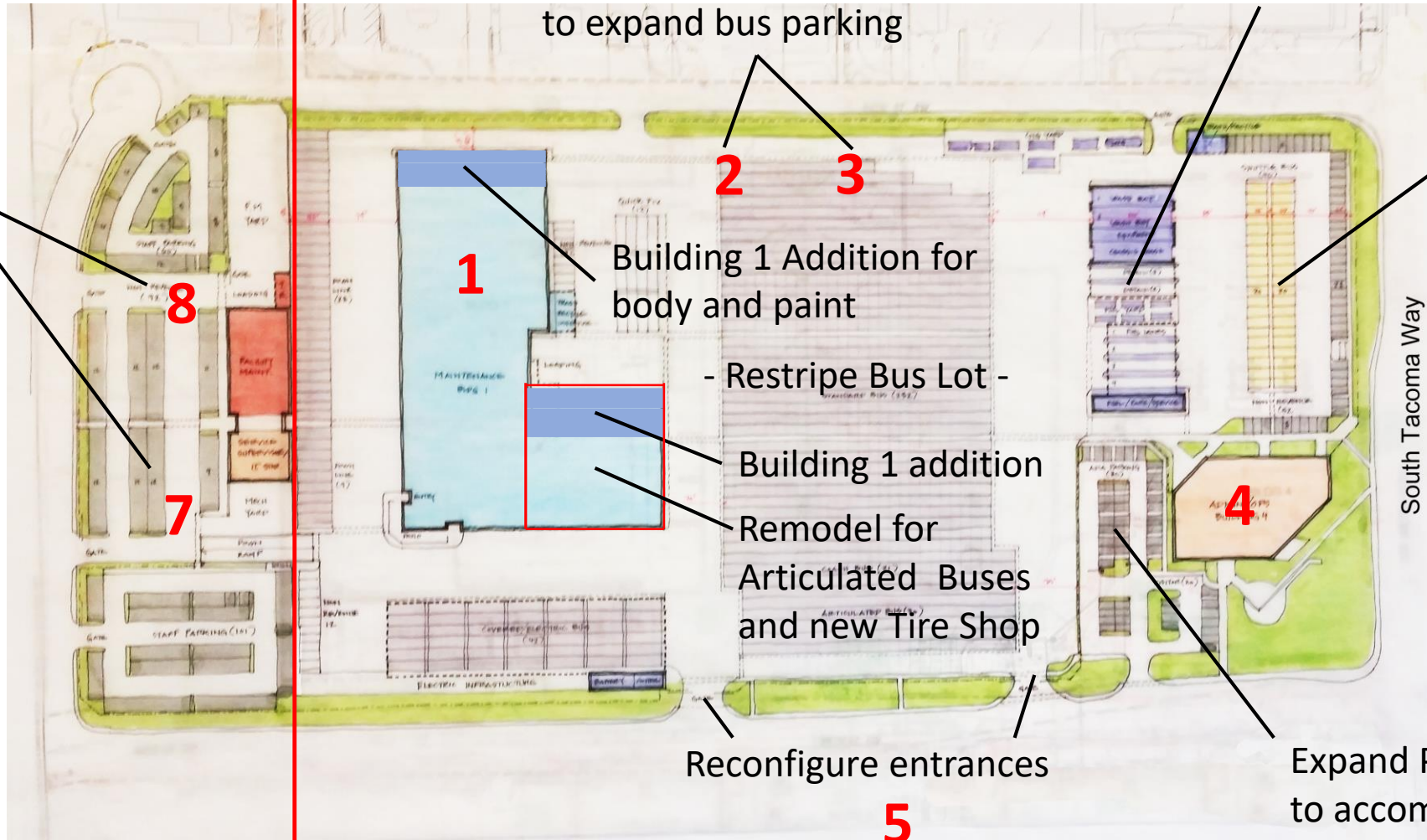
[illegible]

South Tacoma Way

4

A hand-drawn sketch of a building facade, possibly a house or a small commercial building. The drawing is done in a simple, illustrative style with green for the lawn, brown for the building walls, and white for the roof and windows. A prominent diagonal line is drawn across the entire sketch, from the top left towards the bottom right. The sketch is located in the bottom right corner of the page.

**6**





West Base ← → Main Base

Construct new West Base Building. The **New** Building 7

Add new repair bays

Building addition for new Break rm.

Remodel interior spaces throughout building

Construct new ramp entrance to bus lot

Construct new staff and Service Supervisors parking lots

Building 1 Addition for body and paint

- Restripe Bus Lot -

Building 1 addition Remodel for Articulated Buses and new Tire Shop

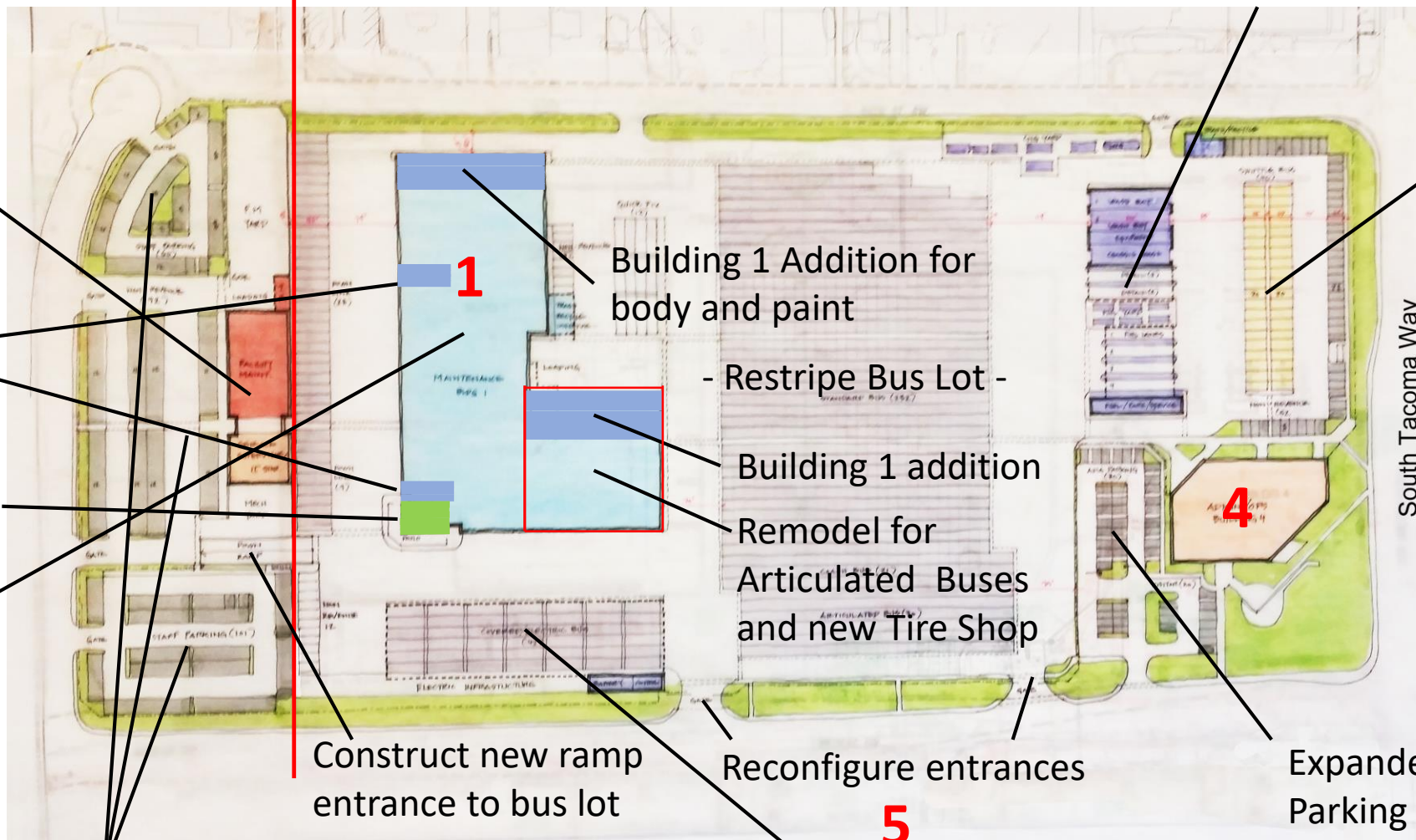
Reconfigure entrances

Raise employee parking lot and convert to electric bus lot

Expand Bus Lot Eastward, add new Fuel, Wash and Fare Collection Facilities

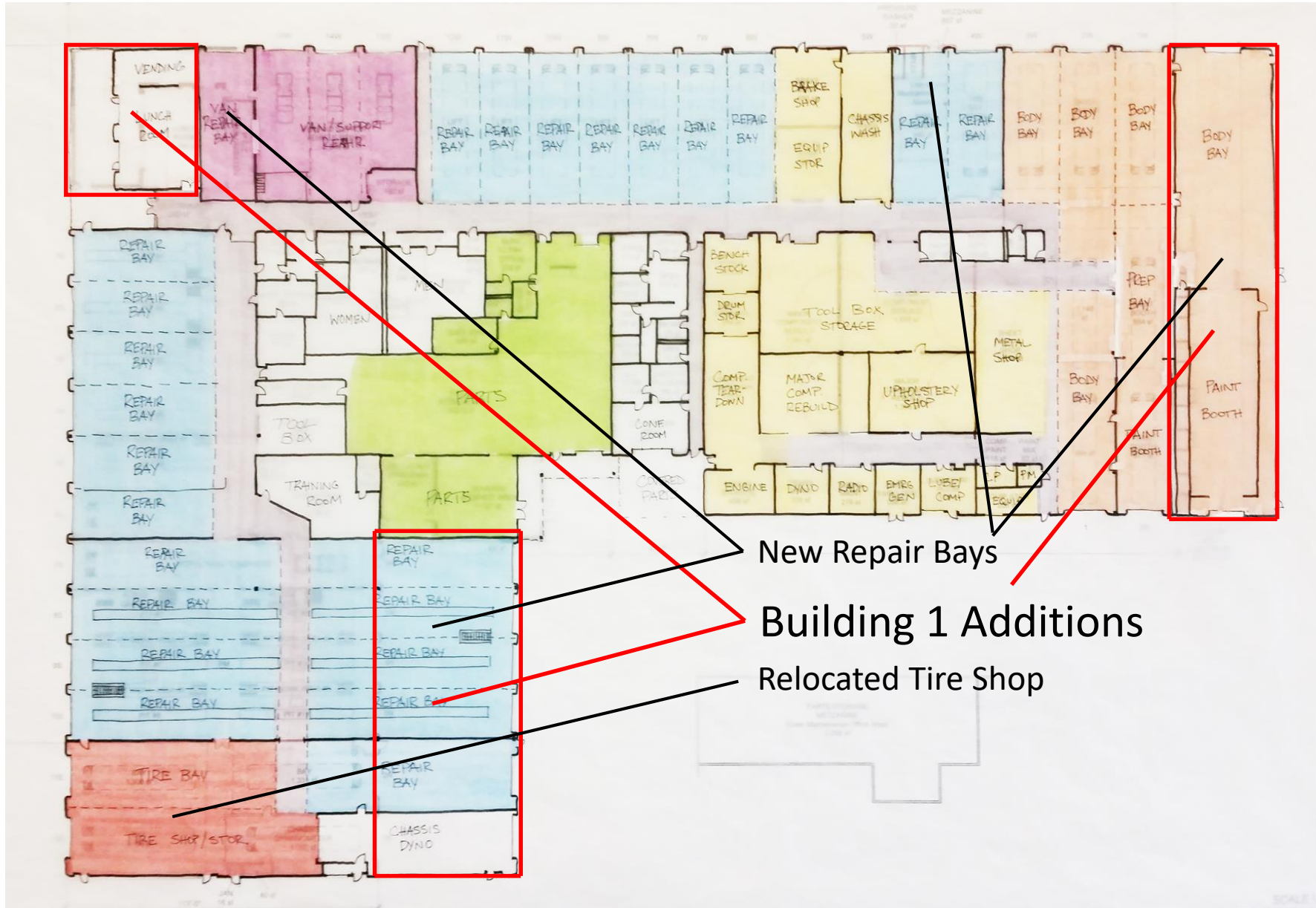
Shuttle and Relief Vehicle parking

Expanded Parking lot to accommodate ADA parking



← **6**

## Building 1 Additions and Revised Program Layout







# Pierce Transit

## MAINTENANCE & OPERATIONS BASE INFRASTRUCTURE AND FACILITIES IMPROVEMENT PROJECT

### Moving Forward

Power Point by Clint Steele