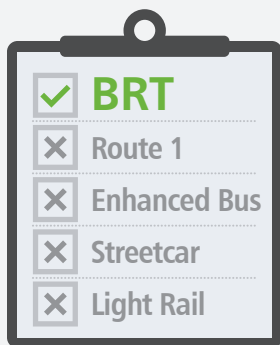




Pierce Transit is nearing an important milestone in the midst of a two-year High Capacity Transit (HCT) Feasibility Study of a 14.4-mile corridor along Pacific Avenue | SR 7 between downtown Tacoma and Spanaway.

What key decisions have been made so far?



Mode Evaluation

Bus Rapid Transit (BRT) best meets all study goals, scoring higher than existing Route 1 service, enhanced bus, streetcar, and light rail transit options. See reverse side for more details on BRT.



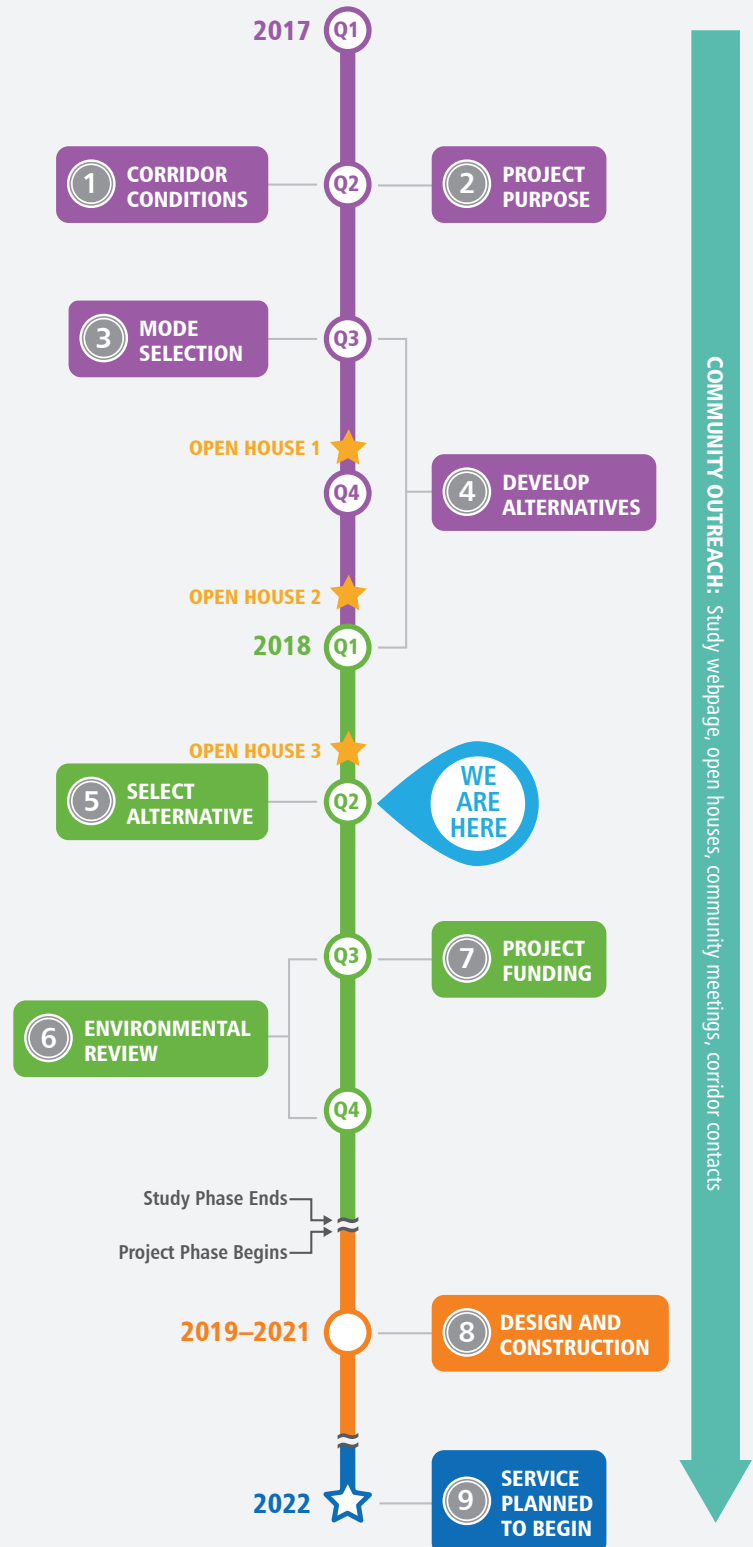
Alternatives Analysis

Regarding where the BRT might operate in the roadway, curbside and median bus way design alternatives are being assessed because they are flexible and provide the best service benefit. They are also the most cost-effective and have the least potential impacts to property while providing better opportunities for economic development in the corridor.

What key decisions are yet to be made?

- » **Select the Locally Preferred Alternative:** Choose among the Curbside Alternative, Median Alternative, or No Build option. ⑤
- » **Secure environmental clearance:** To be eligible for federal funds, the project will need to comply with the National Environmental Policy Act (NEPA). ⑥
- » **Determine a funding plan:** Local funding is in place. But there is still the need to secure federal funding. ⑦

THE STUDY PROCESS



What is Bus Rapid Transit?

Bus Rapid Transit (BRT) is an innovative, high-capacity, lower-cost public transit solution that can achieve the performance and benefits of more expensive rail modes. This integrated system uses specialized buses on roadways or dedicated lanes to quickly and efficiently transport passengers to their destinations, while offering the flexibility to meet a variety of local conditions. BRT system elements can easily be customized to community needs and incorporate state-of-the-art technologies that attract more passengers and ultimately help reduce overall traffic congestion where implemented.

Key Elements of BRT

- » Fast, frequent, and reliable service
- » Enhanced stations
- » Real-time bus arrival information
- » Unique branding
- » Innovative vehicles

Benefits of BRT

- » Significantly decreased travel time
- » Improved accessibility
- » Increased safety and security
- » Increased capacity
- » Transit-supportive redevelopment



How You Can Get Involved



Join electronic mailing list for project updates.
Sign up at www.piercetransit.org/StayConnected



Opportunities to provide feedback at any time, contact:
Darin L. Stavish, AICP, Principal Planner
T: 253.983.3329
Email: hct@piercetransit.org

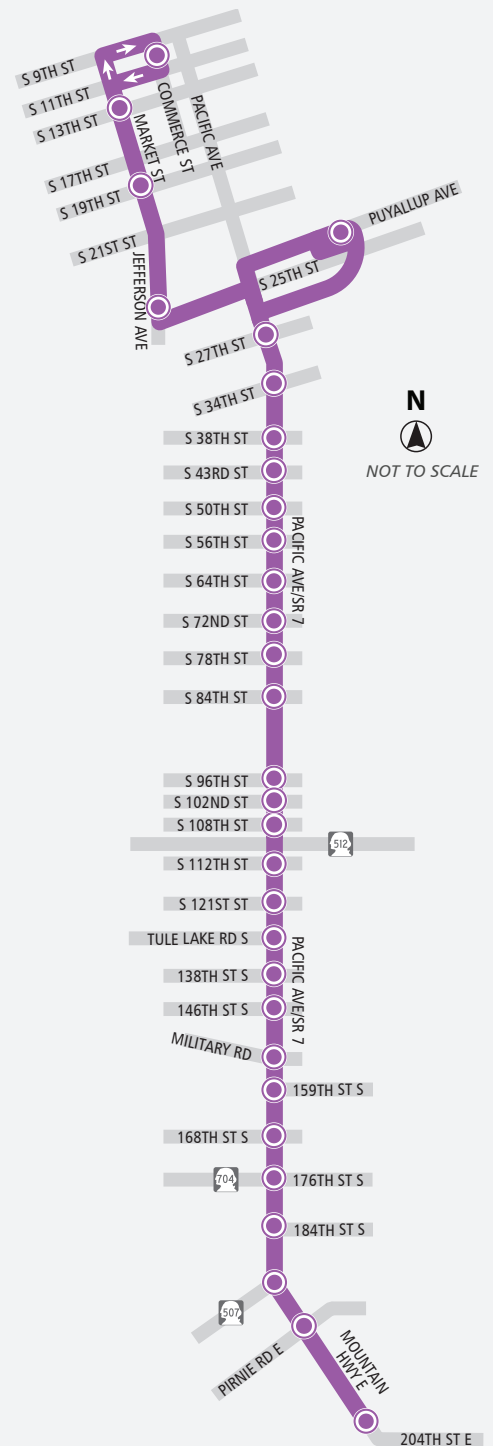


Visit our website to learn more:
www.piercetransit.org/hct-feasibility-study/



Scan the
QR Code to
visit the website

PROPOSED BRT SERVICE ROUTE AND STATION LOCATIONS



LEGEND

- Proposed Pacific Avenue | SR 7 Route
- Proposed Station

Partners:

